



GE HealthCare

LOGIQ Totus™

Ultrasound, the next level for radiology



Versatile imaging and workflow capabilities to enhance confidence, manage costs

Clinical challenge

Radiology practices today weigh critical considerations when making an ultrasound investment. Clinically, can the system better equip the practice to handle the rising demand for ultrasound and increasingly complex workloads? Operationally, will it be a positive factor in helping the practice manage budgetary constraints and gaps in imaging expertise due to staff turnover?

GE HealthCare solution

The new LOGIQ Totus ultrasound system is designed to elevate your confidence in all-around patient care, delivering a surprisingly versatile performance for a balanced investment. You will delight in its superb imaging and advanced tools, enabling productive, patient-centered care across a wide range of clinical scenarios and applications. Innovative AI-powered workflows, image optimization, and measurement tools will streamline patient throughput, even on your busiest days. Because your every second matters.

With a name that means “whole” in Latin, LOGIQ Totus is the total package: a multi-purpose system built for head-to-toe ultrasound imaging. You get advanced imaging optimized for radiology exams across multiple clinical scenarios, combined with AI-powered workflow tools for confidence and efficiency, case after case.

Trust your decisions

LOGIQ Totus is your trusted companion in clinical confidence, with an array of advanced imaging tools not accessible in other ultrasound systems of its class.

cSound™ Imageformer with Advanced Speckle Reduction Imaging (SRI): Experience optimal image uniformity with high spatial and contrast resolution, from superficial to deep anatomies. With every pixel in focus, even small changes in tissue texture are seen with ease and clarity.

Continuous Automated Tissue Optimization (CATO): Helps to increase confidence in detecting and assessing small tissue changes, thanks to the continuous, automatic adjustment of image uniformity and contrast resolution.

Comprehensive portfolio of transducers: Gain flexibility in whole-body imaging with our wide selection of probes, delivering high resolution and uniform depth across all body types.



C1-6-D/C1-6VN-D, ML6-15-D, L6-24-D, 9L-D, L3-12-D, C3-10-D, IC5-9-D, C2-7-D/C2-7VN-D, RAB6-D, RIC5-9-D, Vscan Air™ CL, M5Sc-D

Flow modes: Choose from a variety of flow modes to meet your clinical needs. Using Micro Vascular Imaging (MVI) with Radiantflow™ and B-Flow imaging, you can visualize micro vessels and slow flow states, showing their interconnection in the tissue. The combination of high resolution and sensitivity assists clinicians in evaluating small abdominal or superficial lesions, tiny lymph nodes, and large vessels in the abdomen, head and neck, and extremities.

Ultrasound-Guided Attenuation Parameter (UGAP): Enables early identification, grading and monitoring of patients with suspected MASLD, NASH or ASH. This non-invasive imaging technique is quick, consistent and reliable, with cut-off values available compared to MRI PDFF to guide your daily assessment.

2D Shear Wave Elastography (SWE): Enables quantitative evaluation of tissue elasticity to support assessment of tissue stiffness. This non-invasive imaging technique has a quality map and multiple workflow modes to adapt to your needs. Liver cutoff data is available as a staging guide.

Contrast-Enhanced Imaging (CEUS): Enhance your ability to detect and characterize focal lesions or assess post-traumatic conditions through a comprehensive package of contrast abdominal and superficial settings and tools.

Breast Assistant and Thyroid Assistant, powered by Koios DS™: Take advantage of a second opinion, whenever needed, with these one-touch, machine learning AI-based decision support tools. Trained on 1M+ cases, they provide a lesion quantitative risk assessment aligned to a BI-RADS® or TI-RADS™ category, helping to decrease inter-intra-operator variability and unnecessary biopsies.

B-Steer+: Enhance your confidence with clear needle visualization during procedures.

Volume Navigation (V Nav): Gain advanced capabilities for image-guided procedures, including fusion imaging, needle tip tracking, and 2D/3D GPS markers tracking.

Improve your efficiency

LOGIQ Totus is as agile as it is intuitive. Small and highly mobile, it's at home in tight spaces and can easily manage a vast array of procedures in multiple settings, from the ICU and NICU to patient rooms. Equipped with automated, AI-powered workflow tools, LOGIQ Totus improves efficiency so you can address patient needs quickly and confidently.

AI-based assistant tools: LOGIQ Totus harnesses artificial intelligence (AI) to provide next-level assistance with productivity and decision support tools, including:

- **Auto Abdominal Color Assistant:** Detects the anatomy being scanned and automatically switches to the optimal color flow parameters, such as gain and scale. Can be tailored by the user.
- **Auto Doppler Assistant:** Analyzes an image to determine the location and direction of vessels and then automatically adjusts the color box and angle—enabling users to complete that step 20% faster and with 50% fewer keystrokes.
- **Auto Preset Assistant:** Automatically activates the correct preset for the anatomy being scanned.
- **Auto Lesion Segmentation:** Helps eliminate the need to measure lesions manually by automatically tracing lesion boundaries and generating two-dimensional measurements with just a few keystrokes.

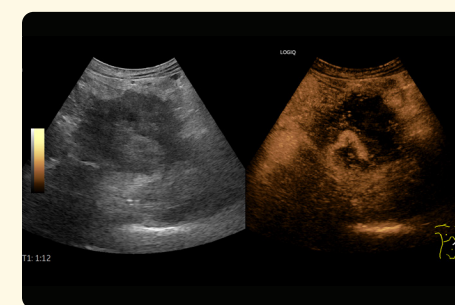
Hepatic Assistant: Enhances efficiency during examinations for suspected chronic liver disease by combining 2D Shear Wave Elastography and UGAP in a single exam with the push of a button.

Auto-Registration for fusion imaging: Enhances accuracy and ease in managing patient motion, breathing, and transmitter movements with one-click auto registration.

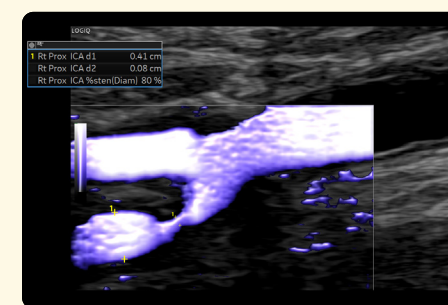
Scan Assistant: Enhances exam speed and consistency with personalized scanning protocols for standard exams or follow-up – available at the touch of a button.

Compare Assistant: Enables easy and accurate follow-up of patients under surveillance or therapy monitoring. This tool allows you to compare the current exam with prior examinations with the same settings carried forward.

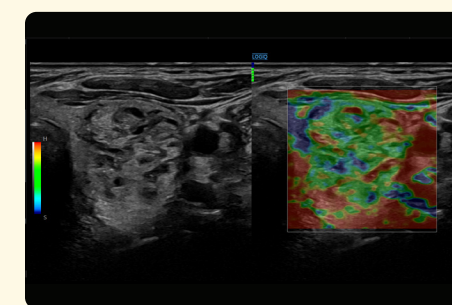
Raw Data: Accommodates patients by enabling data processing and manipulation of acquired images **after** the exam.



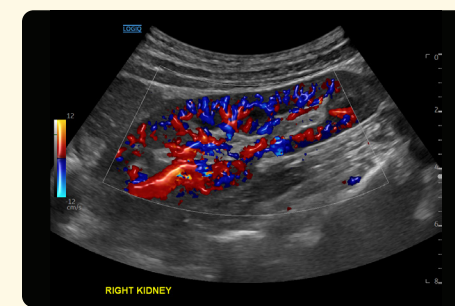
Pancreas mass CEUS, C1-6-D



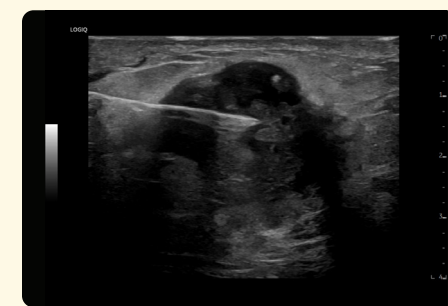
ECA stenosis with MVI and Radiantflow, 9L-D



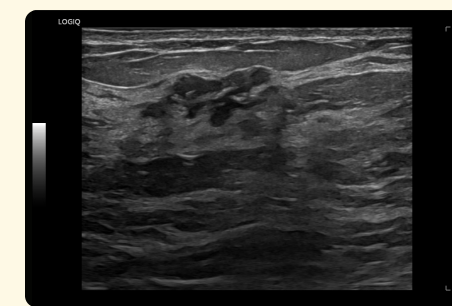
Thyroid strain elastography, L3-12-D



Right kidney CF with Radiantflow, C1-6-D



Breast large mass biopsy, L3-12-D



Complex breast mass B-Mode, ML6-15-D

Expand your solutions

LOGIQ Totus enables your practice to meet evolving ultrasound performance standards with a next-generation platform that expands as you grow. You will be delighted by the positive experience, from advanced technology support and cybersecurity protection to ongoing product and clinical education to a reliable peer network. The result? Total value in terms of patient and clinician satisfaction, and a meaningful return on your ultrasound investment.

You're focused on patients, and we're fully focused on you.

LOGIQ™ with Verisound™ digital and AI ultrasound solutions applies decades of ultrasound experience to minimize chaos, eliminate the mundane, and improve your day-to-day – because an efficient workflow means more focused time on patient care.



Products mentioned in the material may be subject to government regulations and may not be available in all countries. Shipment and effective sale can only occur after approval from the regulator. Please check with local GE HealthCare representative for details.

© 2024 GE HealthCare. LOGIQ, LOGIQ Totus, cSound, Radiantflow, Verisound, and Vscan Air are trademarks of GE HealthCare. BI-RADS and TI-RADS are trademarks of the American College of Radiology. Koios DS is a trademark of Koios Medical. GE is a trademark of General Electric Company used under trademark license.

January 2024
JB27666XX
Global



GE HealthCare