

LOGIQ Fortis™

Ultrasound, the next level for radiology



Powerfully streamlined

Clinical challenge

Radiology practices face multiple challenges, including high demand, challenging cases, and staff turnover. Clinicians need robust ultrasound tools that are easy to use and enable productive, patient-centered care, across a wide range of clinical scenarios and applications.

GE HealthCare solution

The sleek, compact LOGIQ Fortis fits in almost any space and can help you deliver confident care in multiple settings. Its powerful technologies enable a full spectrum of ultrasound exams and procedures. AI-based workflow tools provide decision support and help increase exam efficiency and consistency – so even new users find it easy to become proficient.

Exceeding your clinical expectations

Capable of whole-body imaging and equipped with advanced clinical tools, LOGIQ Fortis will help you deliver exceptional patient care in multiple clinical settings.

cSound™ Architecture with advanced Speckle Reduction Imaging (SRI): LOGIQ Fortis images provide outstanding spatial and contrast image resolution, from near field to depth, to help in differentiating contiguous structures, lesion borders and extensions, and in detecting small tissue changes. Every pixel is in focus – just place the transducer and the information you need is there instantly.

Continuous Automated Tissue Optimization (CATO): Enhances overall contrast in B-Mode images continuously as you move the probe. No need to adjust contrast manually.

Flow modes: Comprehensive package of flow modes includes Microvascular Imaging (MVI), which helps clinicians assess blood flow with ease in the joints, lymph nodes, and other small structures. When combined with Radiantflow™, MVI produces a near 3D-look which enhances confidence in evaluating small abdominal lesions and lymph nodes.

High-performance probes: XDclear™ probes deliver powerful high fidelity and wide bandwidth for deep penetration and high resolution. The new wireless Vscan Air™ CL dual-probe facilitates portable imaging and is easy to clean and keep sterile.

B-Flow imaging: Enables real-time visualization of blood flow echoes without vessel wall overlap.

Contrast-Enhanced Imaging (CEUS): Provides high sensitivity in lesion detection and characterization, from near field to depth, and adds reliable information on lesion behavior, such as contrast uptake times.

2D Shear Wave Elastography (SWE): Helps in the early assessment of chronic liver disease for fibrosis staging by providing quantitative assessment of tissue elasticity.

Ultrasound-Guided Attenuation Parameter (UGAP): Enables non-invasive assessment of liver steatosis to aid in early identification and monitoring of patients with MASLD, NASH or ASH.

Volume Navigation (V Nav): LOGIQ Fortis offers advanced capabilities for image-guided procedures. Fusion Imaging merges real-time ultrasound with a volume DICOM® dataset (CT, MR, PET/CT, CBCT, SPECT and 3D CEUS). Needle Tip Tracking helps users navigate interventional procedures in plane or out of plane. 2D/3D GPS Tracking saves time and enhances confidence.

AI-based decision support: breast and thyroid: Breast Assistant and Thyroid Assistant, powered by Koios DS™, provide a lesion quantitative risk assessment aligned to a BI-RADS® or TI-RADS™ category, helping to decrease inter-intra-operator variability and unnecessary biopsies.

Compare Assistant: View a prior study – ultrasound, mammography, CT or MR – and current images together in real time via a split screen on the monitor.

Optimizing your productivity and workflow

The mobile and powerful LOGIQ Fortis helps clinicians free up time for challenging cases. Intuitive to operate and easy to clean, the system enables users of all skill levels to work proficiently and manage high patient volumes.

Exceptional mobility and remote operation: The system is easy to maneuver and fits almost anywhere—from patient bedside to exam and operating rooms. You can scan on battery and even control the system remotely.

Scan Assistant: Provides customizable automation to assist users at each step of the ultrasound study, helping reduce keystrokes and exam times.

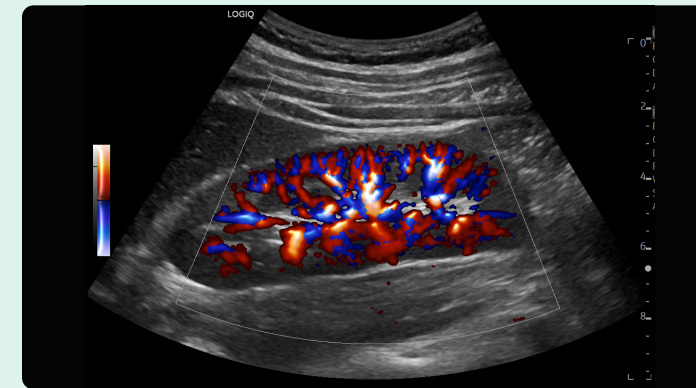
AI-based assistant tools: LOGIQ Fortis uses artificial intelligence (AI) to provide next-level assistance with productivity and decision support tools, including:

- **Auto-Preset Assistant:** Automatically activates the correct preset for the anatomy being scanned – excellent for high-volume settings and practices that see a wide variety of cases.
- **Auto Abdominal Color Assistant:** Detects which abdominal organ is being scanned and automatically switches to the optimal color flow parameters, such as gain and scale, for that organ.
- **Auto Doppler Assistant:** Analyzes an image to determine the location and direction of vessels and then automatically adjusts the color box and angle—enabling users to complete that step 20% faster and with 50% fewer keystrokes.
- **Auto-Renal Measure Assistant:** Automatically detects the kidney and measures the length, height, and width.

Productivity and auto measurement packages: Semi-quantitative Flow Analysis, Breast, Thyroid, and OB help standardize exam quality while saving time.

Photo Assistant app: Acquire photos of relevant anatomy via an Android™ smartphone or tablet and transmit them wirelessly to the ultrasound system for inclusion with the clinical images—providing valuable context for the reviewing physician.

Raw Data: Enables image processing and quantification to be applied after the exam, allowing extraction and reanalysis of information without extending the exam time.



Radiantflow color imaging of kidney, C1-6-D



Carotid bifurcation, L2-9-D

Maximizing your investment

LOGIQ Fortis helps you get a high return on your ultrasound investment, with a growth-oriented digital platform, deep clinical support resources, and advanced cybersecurity protection.

Fully featured and scalable options: Choose from a full suite of robust, standard features and options to configure the optimal system to meet your clinical needs.

SonoDefense: GE HealthCare's multi-layer approach to cybersecurity will help keep your systems safe and functional in the face of cyber threats and protect patient data from unauthorized access.

Lifecycle support: Your system is backed by digital operational support that enhances return on investment (ROI), including performance analytics, software/security updates, live clinical training, and advanced system diagnostics.

Verisound™ digital and AI ultrasound solutions

You're focused on patients, and we're fully focused on you. LOGIQ™ with Verisound digital and AI ultrasound solutions applies decades of ultrasound experience to minimize chaos, eliminate the mundane, and improve your day-to-day – because an efficient workflow means more focused time on patient care.



Products mentioned in the material may be subject to government regulations and may not be available in all countries. Shipment and effective sale can only occur after approval from the regulator. Please check with local GE HealthCare representative for details.

© 2024 GE HealthCare. LOGIQ, LOGIQ Fortis, cSound, XDclear, Radiantflow, Verisound, and Vscan Air are trademarks of GE HealthCare. DICOM is the registered trademark of the National Electrical Manufacturers Association for its standards publications relating to digital communications of medical information. BI-RADS and TI-RADS are trademarks of the American College of Radiology. Koios DS is a trademark of Koios Medical. Android is a trademark of Google LLC. GE is a trademark of General Electric Company used under trademark license.

February 2024
JB27543XX
Global



GE HealthCare