



GE HealthCare

LOGIQ™ E10 Series

Ultrasound, the next level for radiology



Efficient, next-generation imaging, from neonates to geriatric patients

Clinical challenge

Radiology practices face multiple challenges, including high demand, challenging cases and staff turnover. Clinicians need robust ultrasound tools that are easy to use and enable productive, patient-centered care, across a wide range of clinical scenarios and applications.

GE HealthCare solution

Whether the case is routine or technically challenging, the LOGIQ E10 Series helps you make a difference in the lives of your patients. The systems feature cSound™ Architecture, which combines versatile XDclear™ probes and the cSound Imageformer to deliver exceptional image quality in head-to-toe clinical scenarios. New AI-based workflow tools provide decision support and help increase exam efficiency.

Confident diagnoses

The LOGIQ E10 Series enables clinicians to acquire extraordinary images across a broad spectrum of patients, with incredible uniformity from near to far field. The system's advanced imaging technology delivers penetration power even in high-BMI patients.

cSound™ Imageformer with Advanced Speckle Reduction Imaging (SRI): Delivers outstanding spatial and contrast image resolution, from near field to depth, to help in differentiating contiguous structures, lesions borders and extensions and detecting small tissues changes. There's no need to manually adjust the focus—the information you need is there, instantly.

Continuous Automated Tissue Optimization (CATO): Enhances overall contrast in B-Mode images continuously as you move the probe. No need to adjust contrast manually.

Flow modes: Comprehensive package of flow modes to handle a range of exams and body types. Microvascular Imaging (MVI), a high-definition flow mode, helps clinicians assess blood flow with ease in the joints, lymph nodes, and other small structures. MVI visualization is further enhanced when combined with Radiantflow™, providing a near 3D-look.

Comprehensive portfolio of probes: Choice of high-performance probes: E-Series and XDclear probes deliver powerful, high fidelity and wide bandwidth for impressive deep penetration and high resolution. Wireless Vscan Air™ CL dual-probe enables portable imaging, easy to clean and maintain sterility.

Comprehensive tools

The LOGIQ E10 Series provides robust tools that give radiologists a new level of confidence in their diagnostic decisions.

B-Flow imaging: Proprietary non-Doppler technique that enables real-time visualization of blood flow echoes without vessel wall overlap. Enables precise qualitative assessment of vascular occlusions, plaque size, slow flows and vascular patterns.

Contrast-Enhanced Imaging (CEUS): Comprehensive package of contrast settings across the probe portfolio with a balanced contrast resolution and penetration. CEUS provides high sensitivity in lesion detection and characterization, from near field to depth, and adds reliable information on lesion behavior, such as contrast uptake times. CEUS LI-RADS™ classification available onboard.

2D Shear Wave Elastography: Two-dimensional Shear Wave Elastography, now available on more probes, enables quantitative assessment of tissue elasticity. Helps in the early assessment of chronic liver disease for fibrosis staging.

Ultrasound-Guided Attenuation Parameter (UGAP): Enables non-invasive assessment of liver steatosis to aid in early identification and monitoring of patients with MASLD, NASH or ASH.

Volume Navigation (V Nav): The LOGIQ E10 Series offers advanced capabilities for image-guided procedures, including:

- **Fusion Imaging:** Merge real-time ultrasound with a volume DICOM® dataset (CT, MR, PET/CT, CBCT, SPECT and 3D CEUS) to facilitate second-look examinations and biopsy guidance.
- **Needle Tip Tracking:** Helps users navigate interventional procedures in plane or out of plane. Available Virtual Tracking tool displays a projected view of the needle during procedures.
- **2D/3D GPS Tracking:** Visually track position during a scan using GPS-like technology, and mark selected points of interest to save time and enhance confidence.

Photo Assistant app: Acquire photos of relevant anatomy via an Android™ smartphone or tablet, and transmit them wirelessly to the ultrasound system for inclusion with the clinical images—providing valuable context for the reviewing physician.



Concise workflow

The LOGIQ E10 Series has been designed to help radiology departments achieve new levels of efficiency to free up time for heavy workloads and challenging cases.

AI-based Assistant Tools: The LOGIQ E10 Series digital platform uses artificial intelligence (AI) to provide next-level assistance with productivity and decision support tools, helping clinicians improve outcomes, ensure consistency, and increase efficiency.

- **Auto-Preset Assistant:** Automatically activates the correct preset for the anatomy being scanned. An excellent productivity tool for high-volume settings and practices that see a wide variety of cases.
- **Auto Abdominal Color Assistant:** Detects which abdominal organ is being scanned and automatically switches to the optimal color flow parameters, such as gain and scale, for that organ. Can be tailored by the user.
- **Auto Doppler Assistant:** Analyzes an image to determine the location and direction of vessels and then automatically adjusts the color box and angle—enabling users to complete that step 20% faster and with 50% fewer keystrokes.
- **Auto-Renal Measure Assistant:** Automatically detects the kidney and measures the length, height and width.

Productivity and auto measurement packages: Semi-quantitative Flow Analysis, Breast, Thyroid and OB help standardize exam quality while saving time.

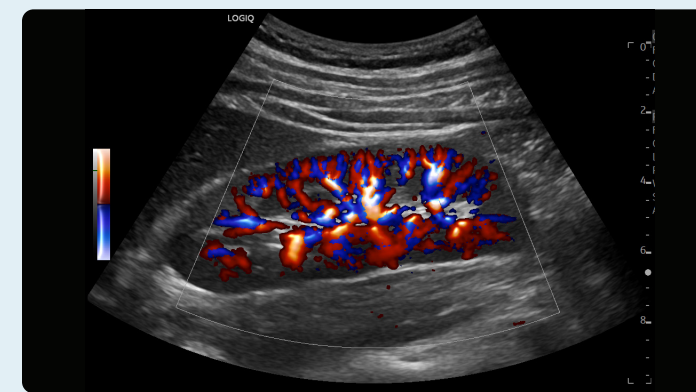
Scan Assistant: Provides customizable automation to assist users at each step of an ultrasound exam, helping to reduce keystrokes and exam times.

Compare Assistant: View a prior study – ultrasound, mammography, CT or MR – and current images together in real time via a split screen on the monitor.

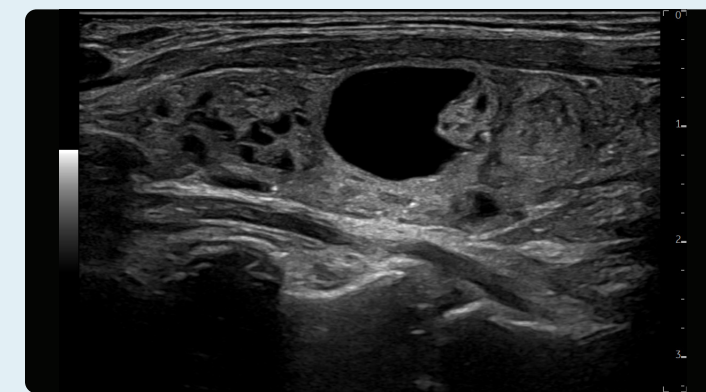
Streamlined archiving and reporting: Robust DICOM connectivity allows images to be saved to a central location and reviewed alongside other imaging modalities.

Expanded Probe Check: Check probe performance with an automatic diagnostic to assure quality and identify issues before they affect workflow and productivity.

Raw Data: Enables image processing and quantification to be applied after the exam.



Radiantflow color imaging of kidney, C1-6-D



Multinodular thyroid, ML4-20-D

Smart investment

GE HealthCare accelerates innovation with the LOGIQ E10 Series – making it the smart choice for now and in the future. The systems are available with a full suite of robust features and scalable options.

Digital platform: Stay at the forefront of clinical imaging with our digital platform, specifically engineered so you can add next-generation capabilities in the years ahead.

Scalable to a whole-body solution: Provides a full suite of robust, standard features and scalable options so you can configure the optimal system to meet your abdominal, cardiac, OB/GYN, vascular, breast, and musculoskeletal imaging needs.

Familiar user interface: The new LOGIQ E10 Series offers greater functionality while maintaining the ease of operation and satisfying user experience that has become a hallmark of LOGIQ interface design.

SonoDefense: GE HealthCare's multi-layer approach to cybersecurity helps keep the systems safe and functional in the face of cyberthreats and helps protect patient data from unauthorized access.

Digital support: Wide choice of efficiency tools to help users, administrators, and operations staff improve productivity, including remote preset management, performance analytics, software/security updates, live clinical training, and advanced system diagnostics.

You're focused on patients, and we're fully focused on you.

LOGIQ with Verisound™ digital and AI ultrasound solutions applies decades of ultrasound experience to minimize chaos, eliminate the mundane, and improve your day-to-day – because an efficient workflow means more focused time on patient care.



Products mentioned in the material may be subject to government regulations and may not be available in all countries. Shipment and effective sale can only occur after approval from the regulator. Please check with local GE HealthCare representative for details.

© 2024 GE HealthCare. LOGIQ, cSound, XDclear, Radiantflow, Vscan Air, and Verisound are trademarks of GE HealthCare. DICOM is the registered trademark of the National Electrical Manufacturers Association for its standards publications relating to digital communications of medical information. LI-RADS is a trademark of American College of Radiology. Android is a trademark of Google LLC. GE is a trademark of General Electric Company used under trademark license.

January 2024
JB27554XX
Global



GE HealthCare