



GE HealthCare

LOGIQ™ Series

Ultrasound, the next level for pediatrics



Fast, accurate ultrasound imaging, from neonates to young adults

Clinical challenge

In pediatric ultrasound, the diversity of the caseload can be challenging. Clinicians need a non-ionizing radiation technology that can image a wide range of patients, from newborns to young adults, and acquire detailed information accurately and efficiently.

GE HealthCare solution

The LOGIQ Ultrasound Series provides exceptional image quality and non-invasive specialty tools that help you deliver confident diagnoses across a range of exams and patient sizes. You can access a wide range of probes, including specialty probes for neonates and a wireless probe for easy NICU access. Enhanced mobility and ergonomics solutions help you be where you're needed at the right time, focused on your patient.

Easy imaging

With extraordinary image quality and robust imaging tools, the LOGIQ Series enables clinicians to diagnose a wide range of patients and conditions, from neonate cranial scans to abdominal or pelvic pain in children and teenagers.

cSound™ Imageformer with Advanced Speckle Reduction Imaging (SRI): Continuously delivers images of incredible uniformity from near to far field. There's no need to manually adjust the focus—the information you need is there, instantly.

Continuous Automated Tissue Optimization (CATO): Supports imaging of smaller structures by enhancing overall contrast in B-Mode images continuously as you move the probe.

Flow modes: Comprehensive package of modes to assess children's fast flows. Microvascular Imaging (MVI), a high-definition flow mode, can be valuable in assessing children's smaller blood vessels and is enhanced by Radiantflow™, which provides a near-3D look for the visualization of tiny vessels.

Comprehensive portfolio of transducers: Choice of pediatrics specialty probes, including baby head and neonate cardiology. New Vscan Air™ CL wireless dual-probe facilitates imaging in tight spaces, such as incubators.



B-Flow imaging: This proprietary non-Doppler technique enables direct, real-time visualization of blood flow echoes with no vessel wall overlap to obscure details. Useful to evaluate perfusion and small vessel structures, such as neonatal head or pediatric kidneys.

B Steer +: Enhances needle visualization in real time to improve speed and confidence when doing needle procedures on pediatric patients. Now also available on abdominal probes.

Volume Navigation (V Nav): The LOGIQ E10 Series offers advanced capabilities for image-guided procedures, including Fusion Imaging and 2D/3D GPS markers.

Contrast-Enhanced Imaging (CEUS): Optimizes the balance between penetration and resolution for improved contrast sensitivity, enhancing the ability to detect and characterize lesions or trauma severity. In addition, CEUS enhances sensitivity when evaluating urinary reflux in children.

2D Shear Wave Elastography: Enables non-invasive 2D quantitative assessment of tissue stiffness and can be of particular value in evaluating liver diseases in children with metabolic syndrome. Strain elastography is also available for qualitative tissue assessment.

Ultrasound-Guided Attenuation Parameter (UGAP): Technique for the non-invasive assessment of liver steatosis to aid in early identification and monitoring of patients with metabolic syndrome.

Efficient workflow

The LOGIQ Series can help you achieve new levels of workflow efficiency, so you have more time to focus on patients.

LOGIQ View: Enables a “virtual sweep” that can help reduce exam times when a panoramic view is needed, as in neonate spine studies.

Virtual Convex: Provides a wide field of view to visualize more anatomy in a single scan, as in pediatric musculoskeletal exams or for superficial kidney scans.

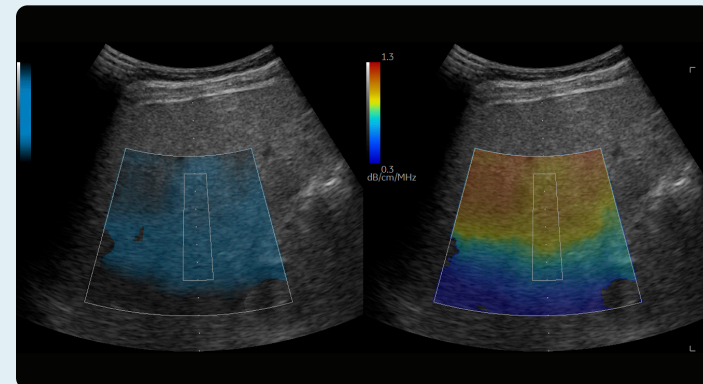
Raw Data: Enables extensive image processing and quantification after the exam to improve workflow and reduce patient stress.

AI-based productivity tools: Including Auto Renal Measure Assistant and Auto Abdominal Color Assistant to support liver and kidney studies.

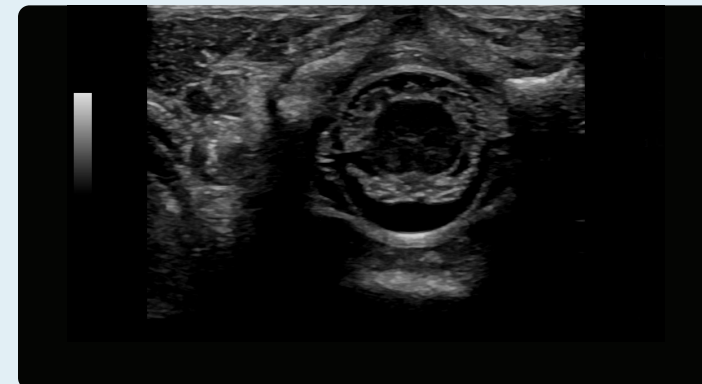
Scan Assistant: Provides customizable scanning protocol automation to assist users at each step of an ultrasound exam, helping to reduce keystrokes and exam times—especially key for the tiniest patients.

Compare Assistant: Easily view a prior study – ultrasound, CT or MR – and current images side-by-side in real time on the monitor to help improve the quality and efficiency of comparison studies, which constitute a high percentage of pediatric ultrasound exams.

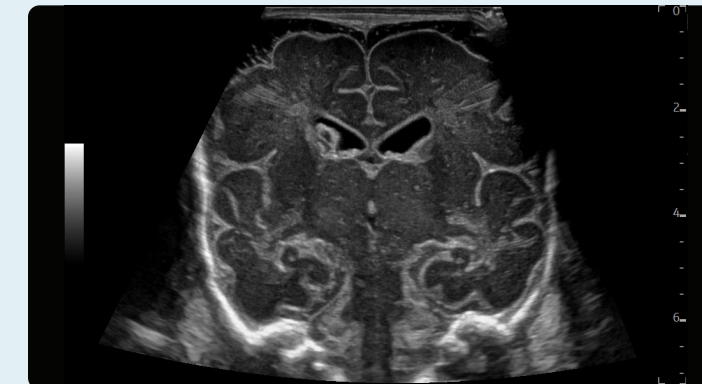
Exceptional mobility: Systems easily fit into crowded suites. Power Assistant battery eliminates the need for re-boot, and you can even scan on battery power, potentially useful in NICU environment.



UGAP in pediatric liver, C2-9-D



Neonatal spine, L8-18i-D



Neohead, ML4-20-D

Enterprise solutions

GE HealthCare accelerates innovation and provides deep support with the LOGIQ Series – making it the smart choice for now and in the future. The systems are available with a full suite of robust features and scalable options.

Digital platform: Stay at the forefront of clinical imaging with LOGIQ digital platform, specifically engineered so you can add next-generation capabilities.

Familiar user interface: The LOGIQ Series keeps adding functionality while maintaining the ease of operation and satisfying user experience that has become a hallmark of LOGIQ interface design.

SonoDefense: GE HealthCare's multi-layer approach to cybersecurity helps keep the systems safe and functional in the face of cyberthreats and helps protect patient data from unauthorized access.

Digital support: Wide choice of efficiency tools to help users, administrators, and operations staff improve productivity, including remote preset management, performance analytics, software/security updates, live clinical training, and advanced system diagnostics.

You're focused on patients, and we're fully focused on you.

LOGIQ with Verisound™ digital and AI ultrasound solutions applies decades of ultrasound experience to minimize chaos, eliminate the mundane, and improve your day-to-day – because an efficient workflow means more focused time on patient care.



Products mentioned in the material may be subject to government regulations and may not be available in all countries. Shipment and effective sale can only occur after approval from the regulator. Please check with local GE HealthCare representative for details.

© 2024 GE HealthCare. LOGIQ, cSound, XDclear, Radiant/low, Vscan Air, and Verisound are trademarks of GE HealthCare. DICOM is the registered trademark of the National Electrical Manufacturers Association for its standards publications relating to digital communications of medical information. GE is a trademark of General Electric Company used under trademark license.

January 2024
JB27526XX
Global



GE HealthCare