



GE HealthCare

LOGIQ Totus™

Ultrasound, the next level for musculoskeletal



Consistent, effortless imaging, from scan-and-go exams to complex cases

Clinical challenge

In musculoskeletal ultrasound, users are challenged by a wide range of cases. Exams cover everything from traumatic injuries to chronic conditions. Imaging must interrogate small joints, nerves, and tiny superficial structures as well as deeper muscles, tendons, ligaments, and other complex structures. Dynamic examinations are common, requiring a highly mobile system that can function in tight spaces.

GE HealthCare solution

The new LOGIQ Totus ultrasound system enhances clinical confidence in musculoskeletal exams through a portfolio of advanced transducers, AI-powered workflow, and robust tools. From quick scan-and-go exams to complex cases, you get consistent results with superb image uniformity and contrast resolution, automatically optimized from small joints to deeper muscles. Highly mobile with voice control and a new wireless probe, LOGIQ Totus is well-suited for interventional procedures and dynamic scanning for sports medicine settings. Ease of use and effortless workflow efficiency add value to your musculoskeletal practice, when your every second matters.

With a name that means “whole” in Latin, LOGIQ Totus is the total package: a multi-purpose system built for head-to-toe ultrasound imaging. You get advanced imaging optimized for musculoskeletal exams combined with AI-powered workflow tools for confidence and efficiency, case after case.

Trust your decisions

LOGIQ Totus is your trusted companion in clinical confidence, with an array of advanced musculoskeletal imaging tools not accessible in other ultrasound systems of its class.

cSound™ Imageformer with Advanced Speckle Reduction Imaging (SRI): Enables easy and clear visualization to help assess tendon tears, peripheral neuropathies, ligament disruptions, and other conditions, due to superb image uniformity and high resolution. Experience increased confidence from near to far field with every pixel in focus.

Comprehensive portfolio of transducers: Gain flexibility in your exams with our wide selection of probes for musculoskeletal imaging.



ML6-15-D, L6-24-D, L3-12-D, 9L-D, Vscan Air™ CL

Flow modes: Choose from a variety of flow modes to meet your clinical needs. Using Microvascular Imaging (MVI) with Radiant/low™ and B-Flow imaging, you can visualize micro-vessels and slow flow states, showing their interconnection in the tissue. By enabling the assessment of inflammatory conditions in the joints or oncological lesions, for example, this information can assist in early staging of the disease process and in planning personalized therapy.

2D Flow Quantification: Stage inflammatory disease or assess vascular feeding of suspicious anatomical areas with this advanced technique. Providing semi-quantitative information on the vascular pattern in a selected region of interest can assist clinicians in planning and monitoring patient therapy.

2D Shear Wave Elastography (SWE): Study the anatomy and functionality of tendons, ligaments, and muscles through quantitative assessment of tissue elasticity. This quick and easy technique can help clinicians interrogate focal masses and assess inflammatory disease or trauma in preparing a recovery plan for athletes.

B-Steer+: Enhance your confidence with clear needle visualization during procedures.

Volume Navigation (V Nav): Gain advanced capabilities for image-guided procedures, including fusion imaging, needle tip tracking, and 2D/3D GPS tracking. Needle tip tracking, for example, helps increase accuracy in complex procedures where precision is critical, such as sacroiliac or facet joint injections for chronic pain management.



Improve your efficiency

LOGIQ Totus is as agile as it is intuitive. Small and highly mobile, it's at home in tight spaces and designed for interventional procedures and dynamic scanning for sports medicine settings. Equipped with automated, AI-powered workflow tools, LOGIQ Totus improves efficiency so you can address patient needs quickly and confidently.

Auto Preset Assistant: Automatically activates the correct preset for the anatomy being scanned.

Scan Assistant: Enhances exam speed and consistency with personalized scanning protocols for standard exams or follow-up – available at the touch of a button.

Compare Assistant: Enables easy and accurate follow-up of patients under surveillance or therapy monitoring, as in rheumatology. This tool allows you to compare the current exam with prior examinations with the same settings carried forward.

Voice Control: Enables users to control machine settings with simple voice commands – an advantage in sterile environments or when needing both hands for the exam, as when scanning extremities.

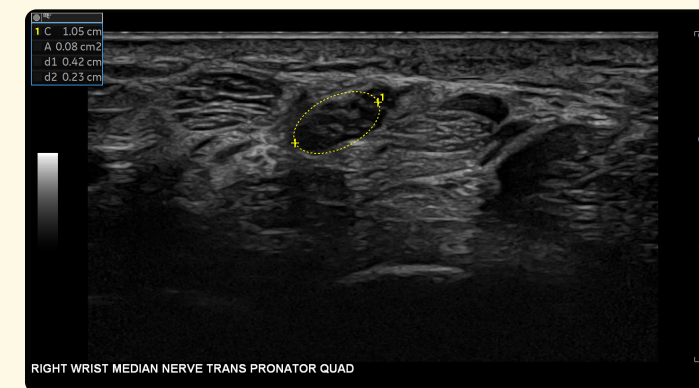
Raw Data: Accommodates patients by enabling data processing and manipulation of acquired images **after** the exam.



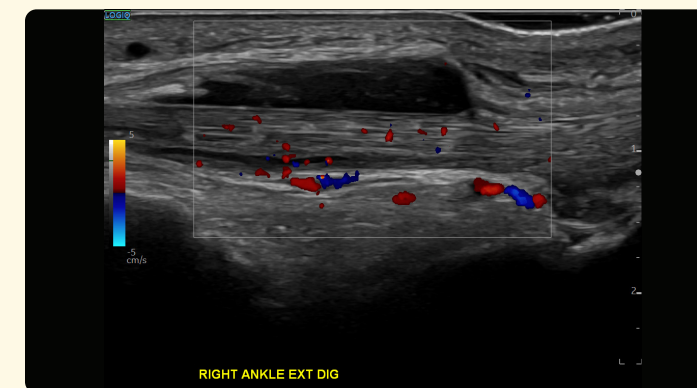
Forearm lump LOGIQ™ view, ML6-15-D



Shoulder supraspinatus tendon B-Mode, ML6-15-D



Wrist B-Mode, L6-24-D



Ankle extensor digitorum CF, ML6-15-D

Expand your solutions

LOGIQ Totus enables your practice to meet evolving ultrasound performance standards with a next-generation platform that expands as you grow. You will be delighted by the positive experience, from advanced technology support and cybersecurity protection to ongoing product and clinical education to a reliable peer network. The result? Total value in terms of patient and clinician satisfaction, and a meaningful return on your ultrasound investment.

You're focused on patients, and we're fully focused on you.

LOGIQ with Verisound™ digital and AI ultrasound solutions applies decades of ultrasound experience to minimize chaos, eliminate the mundane, and improve your day-to-day – because an efficient workflow means more focused time on patient care.



Products mentioned in the material may be subject to government regulations and may not be available in all countries. Shipment and effective sale can only occur after approval from the regulator. Please check with local GE HealthCare representative for details.

© 2024 GE HealthCare. LOGIQ, LOGIQ Totus, cSound, Radiantflow, Verisound, and Vscan Air are trademarks of GE HealthCare. GE is a trademark of General Electric Company used under trademark license.

February 2024
JB27666XX
Global



GE HealthCare