

LOGIQ™ E10 Series

Ultrasound, the next level for musculoskeletal



Diagnose and treat a wide range of musculoskeletal conditions with confidence

Clinical challenge

Ultrasound is a critical diagnostic test for a wide range of musculoskeletal conditions, from traumatic events to oncological or chronic diseases. Clinicians need accurate information in static and dynamic examinations targeting everything from small joints and nerves to deeper muscles, tendons, ligaments, and other complex structures.

GE HealthCare solution

The LOGIQ E10 Series provides accurate information to assist you in diagnosing and staging musculoskeletal disease and implementing the best therapy. Our cSound™ Architecture and XDclear™ transducers deliver exceptional image quality, supported by advanced specialty tools like 2D Shear Wave Elastography. AI-based workflow tools offer decision support while increasing exam efficiency.

Confident diagnoses

Clinicians can scan, diagnose, and treat a broad range of musculoskeletal conditions by relying on LOGIQ E10's high-quality images, deep penetration in larger structures, like the shoulder, and finely detailed visualization in smaller parts, like fingers and wrists.

cSound Imageformer with Advanced Speckle Reduction Imaging (SRI): Delivers outstanding spatial and contrast image resolution, from near field to depth, to help in visualizing and assessing tendon tears, peripheral neuropathies, ligament disruptions, and other conditions. There's no need to adjust the focus manually—the information you need is instantly there.

Flow modes: Comprehensive package of flow modes includes Microvascular Imaging (MVI) and Radiantflow™ to study tissue vascularity. They can help clinicians assess inflammatory conditions such as rheumatoid arthritis, potentially allowing earlier staging of the disease process.

Comprehensive portfolio of probes: Our innovative probes for musculoskeletal imaging deliver accurate information for everything from neurology and rheumatology to soft tissue imaging and interventional studies. Innovations include high-frequency probes, from large footprints to light hockey sticks; high-performing, low-frequency probes; extended bandwidths; button probe; and sensor-embedded solutions for navigation.

Comprehensive tools

The LOGIQ E10 Series provides robust tools that give clinicians a new level of confidence in their diagnostic decisions.

B-Steer+: Enhances needle visualization in real time to improve speed and confidence in needle guidance procedures.

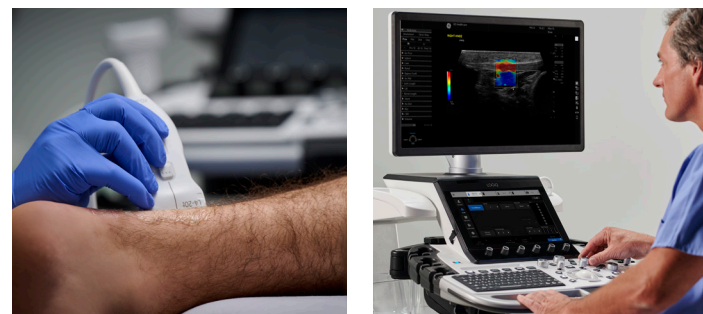
B-Flow imaging: This non-Doppler technique enables direct, real-time visualization of blood flow echoes with no vessel wall overlap to obscure details. B-Flow Capture with Reconstruction provides a 3D view of blood vessels, suppressing artifacts and enhancing weak vessel signals.

2D Shear Wave Elastography: In musculoskeletal imaging, 2D Shear Wave Elastography enables quantitative assessment of soft tissue stiffness in the tendons, ligaments, and muscles. The tool can also be used in the assessment of inflammatory disease, trauma extension in preparation of a recovery plan for athletes, or focal masses.

Volume Navigation (V Nav): The LOGIQ E10 Series offers advanced capabilities for image-guided procedures, including:

- **Fusion Imaging:** Merge real-time ultrasound with a volume DICOM® dataset (CT, MR, PET/CT, CBCT, SPECT and 3D CEUS) to facilitate second-look examinations and biopsy guidance.
- **Needle Tip Tracking:** Helps users find the best needle path and follow the trajectory to the target. The technique helps increase clinical confidence and accuracy in complex procedures where precision is critical, as in sacroiliac or facet joint injections for chronic pain management.

2D Flow Quantification: Delivers semi-quantitative information on the vascular pattern in a selected ROI. This can help in staging inflammatory disease or assessing vascular feeding of suspicious anatomical areas, which is vital to therapy planning.



Concise workflow

The LOGIQ E10 Series can help you achieve new levels of workflow ease and efficiency, giving you more time to focus on patients.

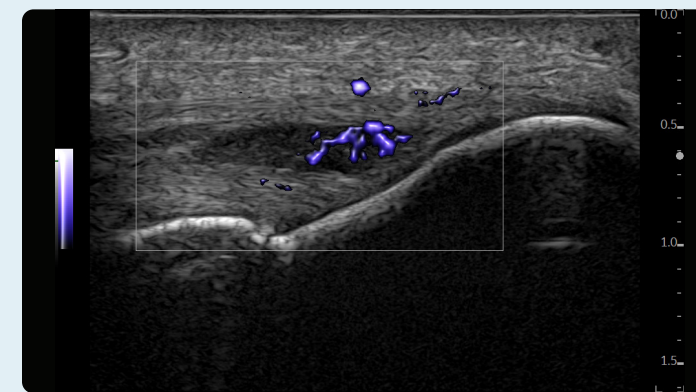
Virtual Convex: Provides a wide field of view so users can visualize more anatomy in a single scan.

LOGIQ View: Constructs an extended image from individual frames, enabling a “virtual sweep” to help improve visualization of the entire tendon or muscle.

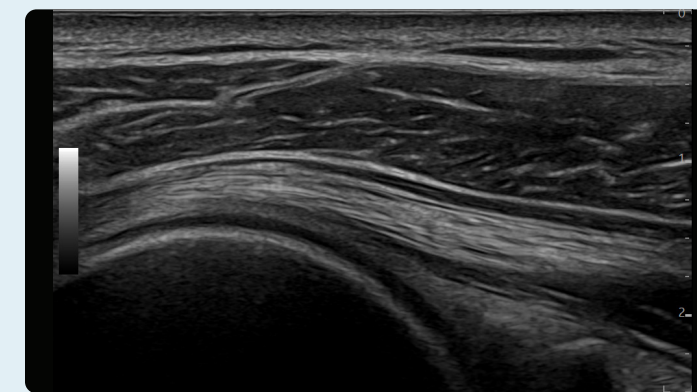
Scan Assistant: Provides customizable automation to assist users at each step of the ultrasound study, helping reduce keystrokes and exam times.

Compare Assistant: View a prior study – ultrasound, CT or MR – and current images together in real time via a split screen on the monitor.

Raw Data: Enables image processing and quantification to be applied after the exam, allowing extraction and reanalysis of information without extending the exam time.



MVI with Radiantflow – elbow, L6-24-D



Shoulder – B-Mode, ML4-20-D

Smart investment

GE HealthCare accelerates innovation with the LOGIQ E10 Series – making it the smart choice for now and in the future. The systems are available with a full suite of robust features and scalable options.

Digital platform: Stay at the forefront of clinical imaging with our digital platform, specifically engineered so you can add next-generation capabilities in the years ahead.

Familiar user interface: The LOGIQ E10 Series offers greater functionality while maintaining the ease of operation and satisfying user experience that has become a hallmark of LOGIQ interface design.

SonoDefense: GE HealthCare's multi-layer approach to cybersecurity helps keep the systems safe and functional in the face of cyberthreats and helps protect patient data from unauthorized access.

Digital support: Wide choice of efficiency tools to help users, administrators, and operations staff improve productivity, including remote preset management, performance analytics, software/security updates, live clinical training, and advanced system diagnostics.

You're focused on patients, and we're fully focused on you.

LOGIQ with Verisound™ digital and AI ultrasound solutions applies decades of ultrasound experience to minimize chaos, eliminate the mundane, and improve your day-to-day – because an efficient workflow means more focused time on patient care.



Products mentioned in the material may be subject to government regulations and may not be available in all countries. Shipment and effective sale can only occur after approval from the regulator. Please check with local GE HealthCare representative for details.

© 2024 GE HealthCare. LOGIQ, cSound, XDclear, and Radiantflow, and Verisound are trademarks of GE HealthCare. DICOM is the registered trademark of the National Electrical Manufacturers Association for its standards publications relating to digital communications of medical information. GE is a trademark of General Electric Company used under trademark license.

January 2024
JB27570XX
Global



GE HealthCare