

LOGIQ Totus™

Ultrasound, the next level for liver



Do more with specialty imaging and workflow tools: a smart investment in liver care

Clinical challenge

In managing patients with liver cancer or a chronic liver condition, clinicians need to detect and stratify the disease as early as possible to begin appropriate treatment and, potentially, avoid invasive procedures. The large variety of patient body types, many with high BMI, can be challenging to image. Access to care and budget constraints may also be of concern.

GE HealthCare solution

The new LOGIQ Totus ultrasound system is a smart investment, designed to elevate your confidence in liver care with a surprisingly versatile performance. You will delight in its superb imaging and advanced tools, typically available only on premium systems. Innovative AI-powered workflows, image optimization, and measurement tools will streamline patient throughput, even on your busiest days. Because your every second matters.

With a name that means “whole” in Latin, LOGIQ Totus is the total package: a multi-purpose system built for head-to-toe ultrasound imaging. You get advanced imaging optimized for liver exams combined with AI-powered workflow tools for confidence and efficiency, case after case.

Trust your decisions

LOGIQ Totus is your trusted companion in clinical confidence, with an array of advanced liver imaging tools not accessible in other ultrasound systems of its class.

cSound™ Imageformer with Advanced Speckle Reduction Imaging (SRI): Optimizes image uniformity in liver studies with high spatial and contrast resolution, from liver capsule to diaphragm. With every pixel in focus, even small changes in the liver texture can be seen with ease and clarity.

Continuous Automated Tissue Optimization (CATO): Helps to increase confidence in detecting and assessing small lesions, thanks to the continuous, automatic adjustment of image uniformity and contrast resolution.

Comprehensive portfolio of transducers: Gain flexibility in your exams with our selection of probes for liver imaging.



C1-6-D/C1-6VN-D, 9L-D, M5Sc-d, RAB6-D, C2-7-D/C2-7VN-D, Vscan Air™ CL

Flow modes: Choose from advanced flow modes for the most suitable technique for your patients. Using Microvascular Imaging (MVI) with Radiantflow™ and B-Flow imaging, you can visualize micro vessels and slow flow states, showing their interconnection in the tissue. The high resolution and sensitivity enhance your confidence in studying small abdominal lesions or lymph nodes, the hepatic vascular tree, and the vascular structure of potential lesions.

Ultrasound-Guided Attenuation Parameter (UGAP): Enables early identification, grading and monitoring of patients with suspected MASLD, NASH or ASH. This non-invasive imaging technique is quick, consistent, and reliable, with cut-off values available compared to MRI PDFF to guide your daily assessment.

2D Shear Wave Elastography (SWE): Enables quantitative evaluation of tissue elasticity to support early assessment of liver fibrosis. This non-invasive imaging technique has a quality map and multiple workflow modes to adapt to your needs. Cutoff data is available as a staging guide.

Contrast-Enhanced Imaging (CEUS): Enhance your ability to detect and characterize focal liver lesions from the liver capsule to the diaphragm through a comprehensive package of contrast abdominal settings and quantification tools.

B-Steer+: Enhance your confidence with clear needle visualization during liver procedures.

Volume Navigation (V Nav): LOGIQ Totus offers advanced capabilities for image-guided procedures, including:

- **Fusion Imaging:** Merges real-time ultrasound with a volume DICOM® dataset (CT, MR, PET/CT, CBCT, SPECT, and 3D CEUS) to facilitate second-look examinations and biopsy guidance. Needle tip tracking supports invasive procedures, like liver biopsies.
- **2D/3D GPS Tracking:** Visually tracks position during a scan using GPS-like technology and marks selected points of interest.

Improve your efficiency

LOGIQ Totus is as agile as it is intuitive. Small and highly mobile, it's at home in tight spaces and designed for interventional procedures. Equipped with automated, AI-powered workflow tools, LOGIQ Totus improves efficiency so you can address patient needs quickly and confidently.

AI-based assistant tools: LOGIQ Totus harnesses artificial intelligence (AI) to provide next-level assistance with productivity and decision support tools, including:

- **Auto Abdominal Color Assistant:** Detects when the liver is being scanned and automatically switches to the optimal color flow parameters, such as gain and scale. Can be tailored by the user.
- **Auto Lesion Segmentation:** Helps eliminate the need to measure liver lesions manually by automatically tracing lesion boundaries and generating two-dimensional measurements with just a few keystrokes.

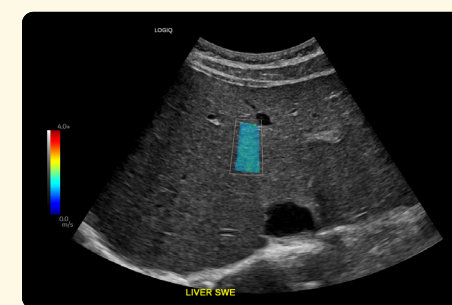
Hepatic Assistant: Enhances efficiency during exams for suspected chronic liver disease by combining 2D Shear Wave Elastography and UGAP in a single exam with the push of a button.

Auto-Registration for fusion imaging: Enhances accuracy and ease in managing patient motion, breathing, and transmitter movements with one-click auto registration.

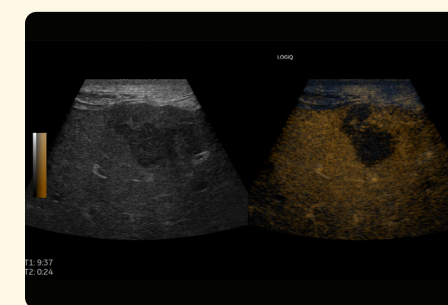
Scan Assistant: Drives exam speed and consistency with personalized scanning protocols for standard scanning or follow-up – available at the touch of a button.

Compare Assistant: Enables easy and accurate follow-up of patients under surveillance or therapy monitoring. This tool allows you to compare the current exam with prior examinations with the same settings carried forward.

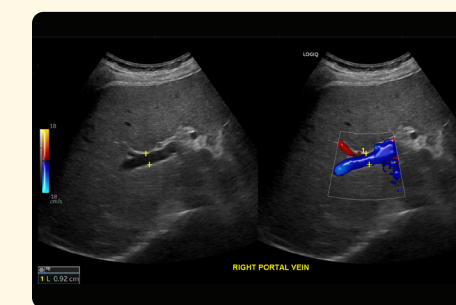
Raw Data: Accommodates patients by enabling data processing and manipulation of acquired images **after** the exam.



Liver 2D Shear Wave Elastography, C1-6-D



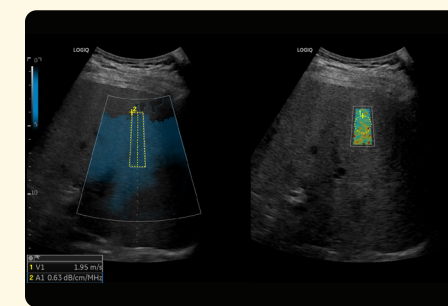
Liver mass CEUS hybrid view, 9L-D



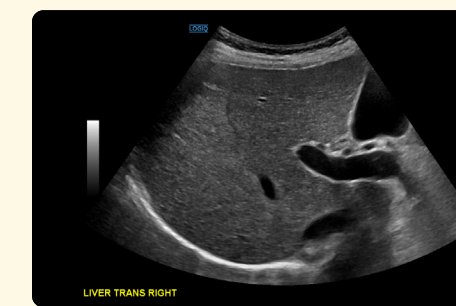
Liver right portal vein CF with Radiantflow, C1-6-D



Liver mass B-Mode, C1-6-D



Hepatic Assistant, C1-6-D



Right liver B-Mode with CTO, C1-6-D

Expand your solutions

LOGIQ Totus enables your practice to meet evolving ultrasound performance standards with a next-generation platform that expands as you grow. You will be delighted by the positive experience, from advanced technology support and cybersecurity protection to ongoing product and clinical education to a reliable peer network. The result? Total value in terms of patient and clinician satisfaction, and a meaningful return on your ultrasound investment.

You're focused on patients, and we're fully focused on you.

LOGIQ™ with Verisound™ digital and AI ultrasound solutions applies decades of ultrasound experience to minimize chaos, eliminate the mundane, and improve your day-to-day – because an efficient workflow means more focused time on patient care.



Products mentioned in the material may be subject to government regulations and may not be available in all countries. Shipment and effective sale can only occur after approval from the regulator. Please check with local GE HealthCare representative for details.

© 2024 GE HealthCare. LOGIQ, LOGIQ Totus, cSound, Radiant/low, Verisound, and Vscan Air are trademarks of GE HealthCare. DICOM is the registered trademark of the National Electrical Manufacturers Association for its standards publications relating to digital communications of medical information. GE is a trademark of General Electric Company used under trademark license.

February 2024
JB27663XX
Global



GE HealthCare